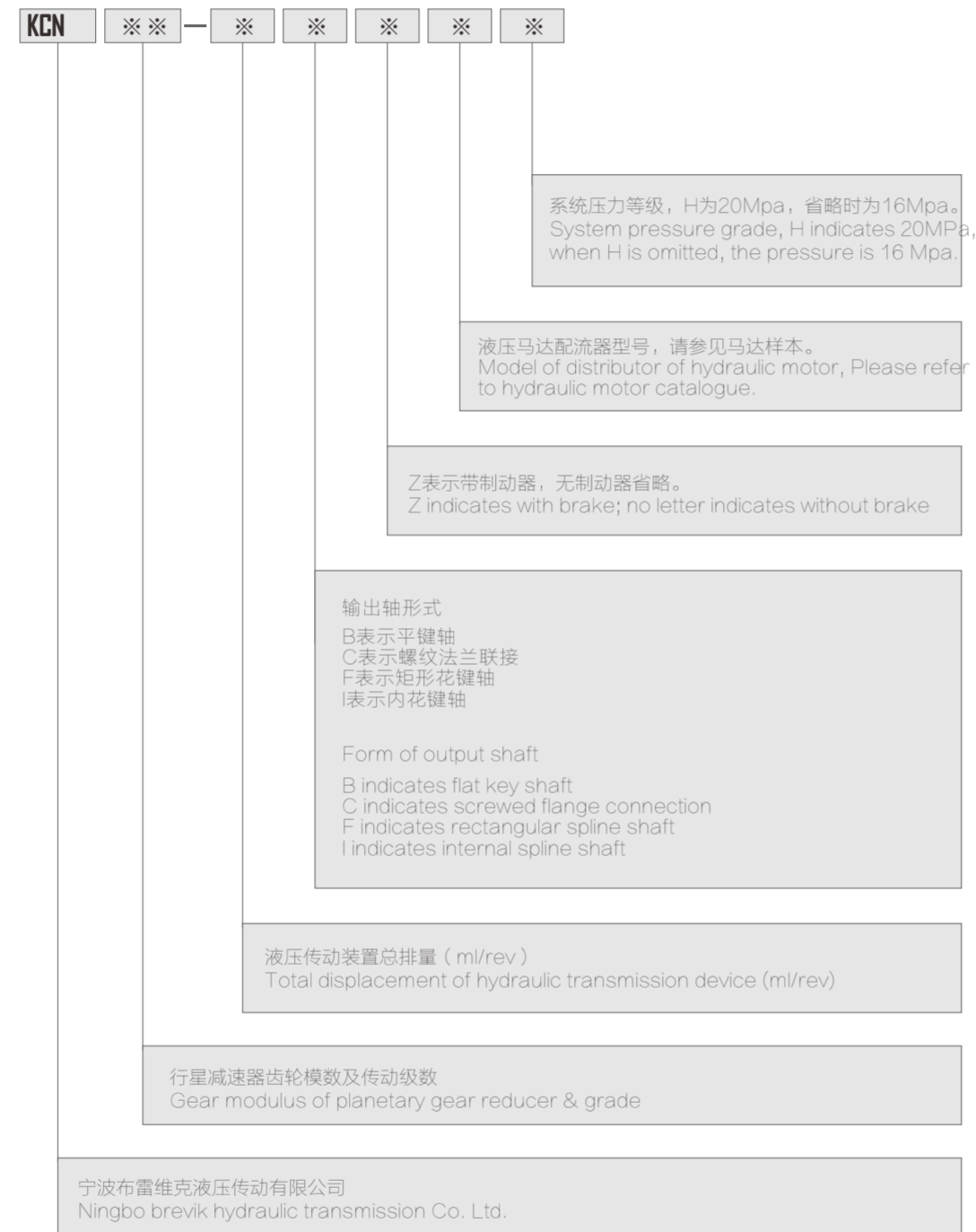


KCN 系列液压传动装置



型号说明 Description of model



KCN 系列液压传动装置



选型举例

KCN3-1000CD31H表示该液压传动装置采用单级行星减速器传动, 齿轮箱模数为3, 总排量为 1000ml/rev, 输出轴采用螺纹联接, 液压马达配流器D31, 额定压力等级为20MPa。

参数说明

- 1、总排量为液压马达排量乘以减速传动比。
- 2、额定扭矩是在系统压力为16MPa或20MPa时, 考虑传动效率后的实际输出扭矩。
- 3、传动效率包括液压马达的机械效率和行星减速器机械效率。

选型说明

- 1、KCN液压传动装置允许在高压下工作。在连续工作时, 使用背压10MPa。
- 2、壳体允许最高压力为0.3MPa, 如有特殊要求, 请与厂家联系。
- 3、液压油: 建议使用高质量、防泡沫、抗氧化的矿基液压油, 理想工作油温30℃~50℃, 允许油温-20℃~80℃, 当油温低于10℃时, 必须用低凝液压油。液压油的粘度为40~60厘沱, 允许为5~300厘沱。
- 4、液压油过滤精度推荐为25 μm, 或更高过滤精度。
- 5、液压传动装置均可双向旋转, 具体转向见附图。如用户要求与图示转向相反, 请在订货时注明。
- 6、泄油管定位: KCN传动装置允许任何方向安装, 为保证马达内各运动副的润滑, 要求在工作之前将马达内充满液压油, 泄油口位置的选择必须保证运转中壳体充满液压油。
- 7、配流器进油口方向: 配流器进油口方向允许按外形安装联接位置以72度为间隔旋转, 但当松开螺钉旋转时, 要当心不能损坏平面O形圈的密封功能。

Example of Model Selection

KCN3-1000CD31H means the hydraulic transmission device adopts single-grade planetary reducer transmission with modulus of gearbox being 3 and total displacement of 1000ml/rev; the output shaft adopts screwed connection. Hydraulic motor distributor is D31 and the rated pressure grade is 20MPa.

Description on Parameters

1. The total displacement is calculated by multiplying hydraulic motor displacement with reduction transmission ratio.
2. Rated torque is the actual output torque taking transmission efficiency into account when system pressure is 16MPa or 20MPa
3. Transmission efficiency includes the mechanical efficiency of hydraulic motor and the mechanical efficiency of planetary reducer.

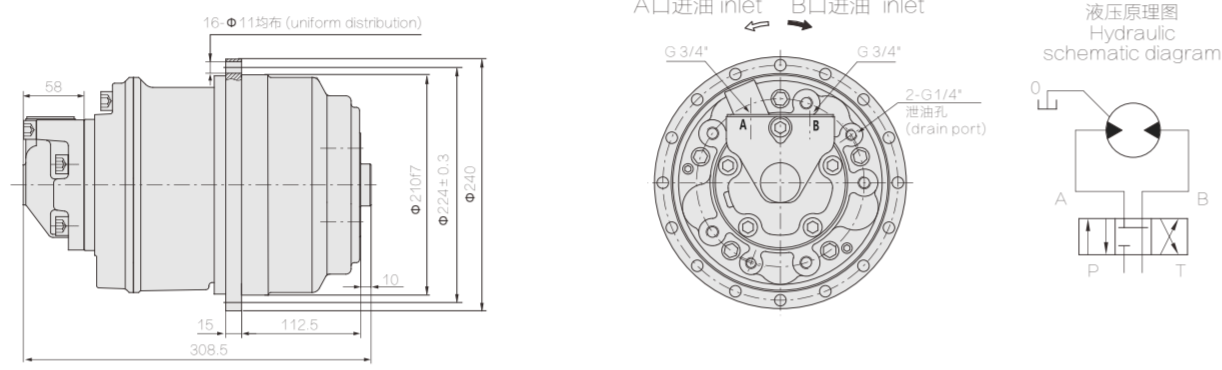
Description on Selection of Model

1. KCN hydraulic transmission device can work under high pressure
2. The max permissible pressure of the housing is 0.8MPa. If you have any special requirements, please contact the manufacturer
3. Hydraulic oil: recommend using high quality, anti-foaming and anti-oxidation mineral hydraulic oil. The ideal working oil temperature is 30°C to 50°C and the permissible oil temperature is between -20°C to 80°C. When oil temperature is lower than -10°C, Low-freezing hydraulic oil must be used. The viscosity of hydraulic oil is between 40-60 CST centistokes and the permissible viscosity is 5-300 CST centistokes.
4. The recommended hydraulic oil filtering precision is 25 μm or higher;
5. The hydraulic transmission device can rotate in both directions; please see the details in the attached charts. If users require the equipment to rotate in opposite direction, please make notes when you place orders.
6. Positioning of oil drain: XHSC transmission device allows to be installed in any direction. To ensure the lubrication of all kinematic pair, it's required to fill hydraulic oil into the motor before Working. The selection of position of oil drain port must be able to ensure that the housing is full of hydraulic oil when it operates.
7. Selection of distributor: All sorts of hydraulic transmission device can select to use the distributors of various specifications according to the requirements of different working conditions. The principle for selection of distributor: to select distributor according to the using pressure, rotation speed, flow, connecting method and the requirements of the integrated valve group; installation of distributor: the direction of oil inlet and outlet of distributors allows to rotate with interval of 72° around the external installation and connection location. However, when the distributor is rotated while the bolt is released, be careful not to damage the seal function of plane O-ring.

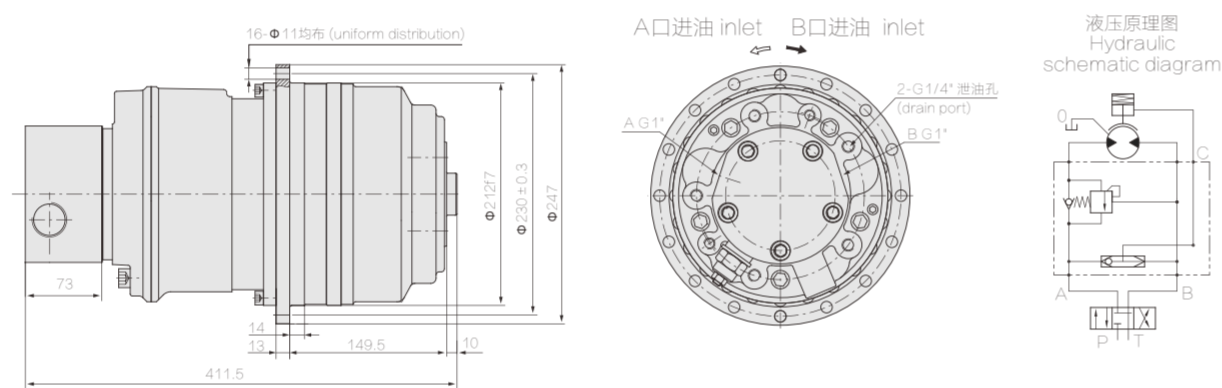
KCN2.5 系列液压传动装置



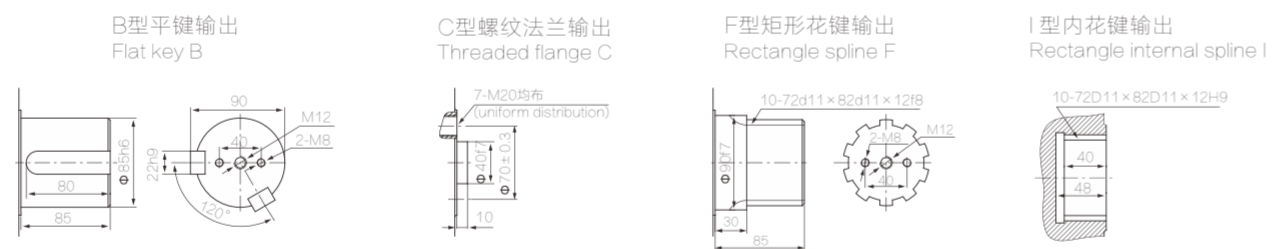
无制动器 Without brake



带制动器(内置式) With brake and internal installation



输出轴形式 Shaft dimensions



型号 Model	总排量 Displacement (ml/r)	额定扭矩 Rated Torque (N.m) 20MPa	转速范围 Speed range (r/min)	总效率 Total efficiency	液压马达型号 Hydraulic motor model	行星减速 机型号 Planetary gearbox	制动器型号 Brake
KCN2.5-550	575	1630	0-90	0.88-0.9	KGM05-110	C2.5-5	Z2.5
KCN2.5-650	645	1826	0-90	0.88-0.9	KGM05-130	C2.5-5	Z2.5
KCN2.5-750	755	2136	0-90	0.88-0.9	KGM05-150	C2.5-5	Z2.5
KCN2.5-850	830	2350	0-90	0.88-0.9	KGM05-170	C2.5-5	Z2.5
KCN2.5-950	955	2706	0-90	0.88-0.9	KGM05-200	C2.5-5	Z2.5
KCN2.5-1050	1050.5	2976	0-90	0.88-0.9	KGM05-200	C2.5-5.5	Z2.5

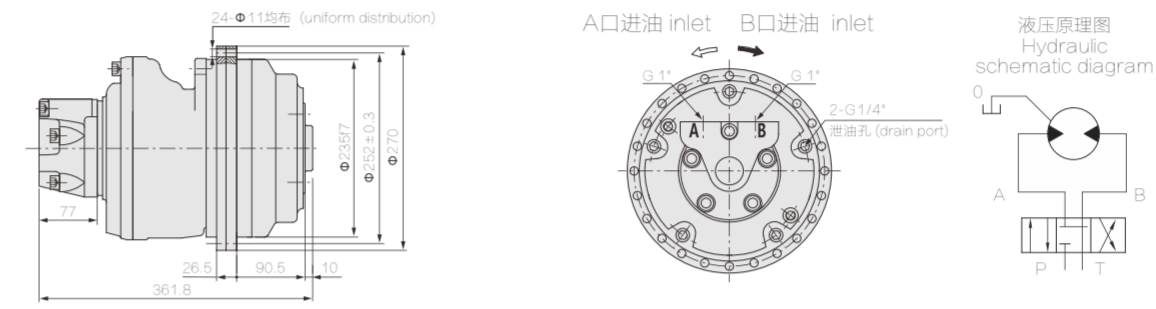
注: 如客户需要其它速比和其它输出形式, 请与本公司联系。
Note: If the customer need other speed ratio and other output form, please contact with us.

宁波布雷维克液压传动有限公司 NINGBO BREVIK HYDRAULIC TRANSMISSION CO.,LTD.
地址: 宁波市北仑区南山路185号 电话: 0574-55876078 传真: 0574-55875079 网址: www.nbbv.com 邮箱: nb_bvk@163.com

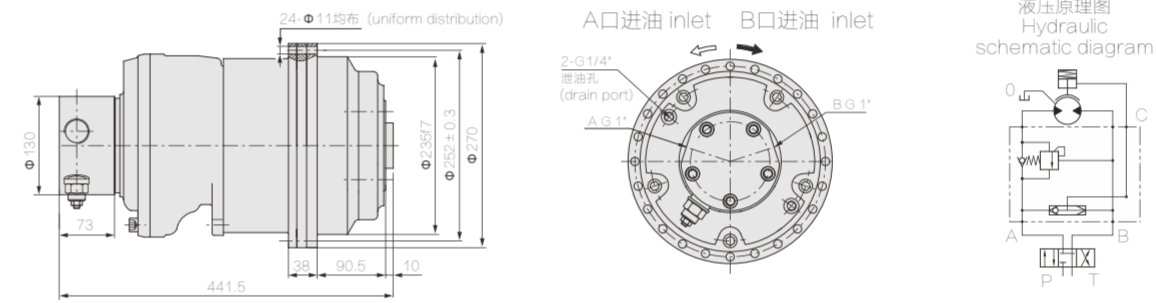
KCN3 系列液压传动装置



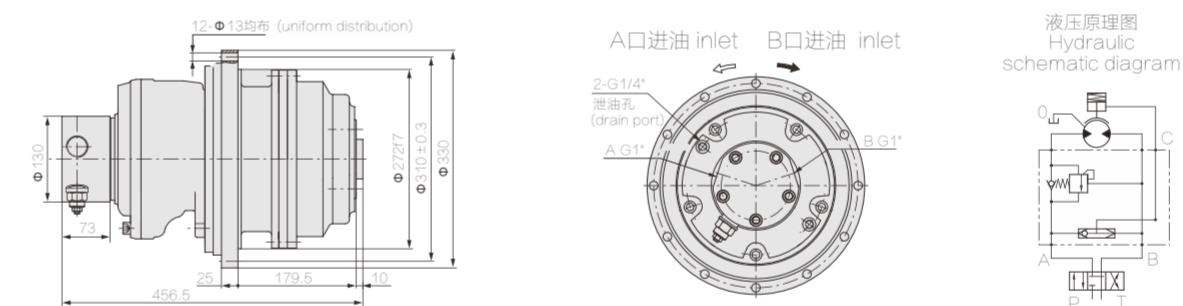
无制动器 Without brake



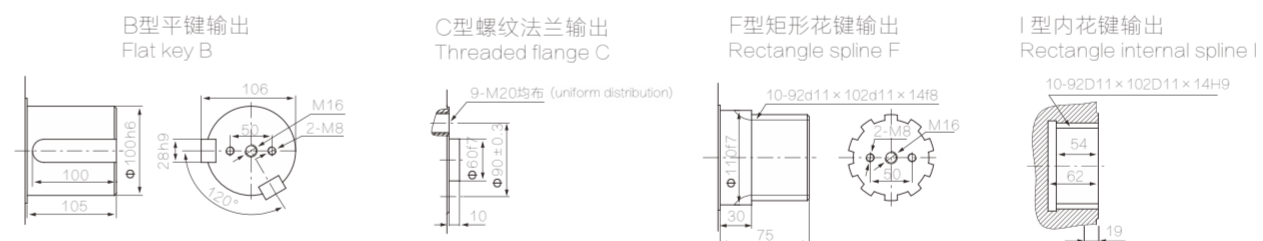
带制动器(外置式) With brake and external installation



带制动器(内置式) With brake and internal installation



输出轴形式 Shaft dimensions



型号 Model	总排量 Displacement (ml/r)	额定扭矩 Rated Torque (N.m) 20MPa	转速范围 Speed range (r/min)	总效率 Total efficiency	液压马达型号 Hydraulic motor model	行星减速 机型号 Planetary gearbox	制动器型号 Brake
KCN3-1250	1215	3382	0-90	0.88-0.9	KGM1-250	C3-5	Z3
KCN3-1450	1450	4022	0-90	0.88-0.9	KGM1-300	C3-5	Z3
KCN3-1600	1570	4361	0-90	0.88-0.9	KGM1-320	C3-5	Z3

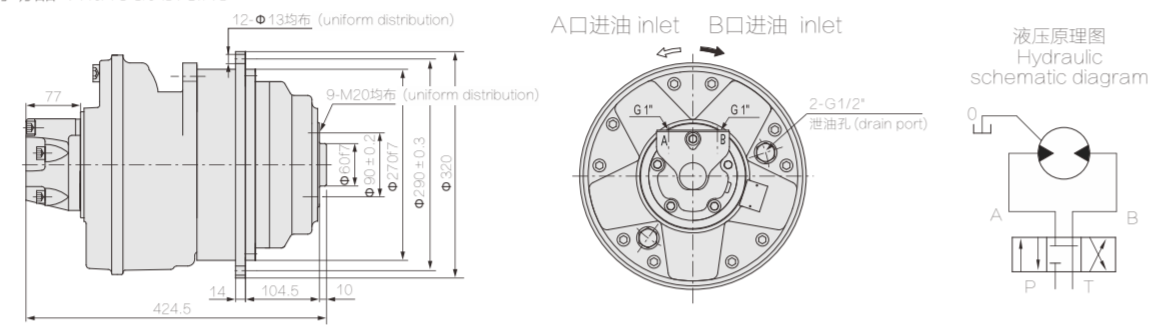
注: 如客户需要其它速比和其它输出形式, 请与本公司联系。
Note: If the customer need other speed ratio and other output form, please contact with us.

宁波布雷维克液压传动有限公司 NINGBO BREVIK HYDRAULIC TRANSMISSION CO.,LTD.
地址: 宁波市北仑区南山路185号 电话: 0574-55876078 传真: 0574-55875079 网址: www.nbbv.com 邮箱: nb_bvk@163.com

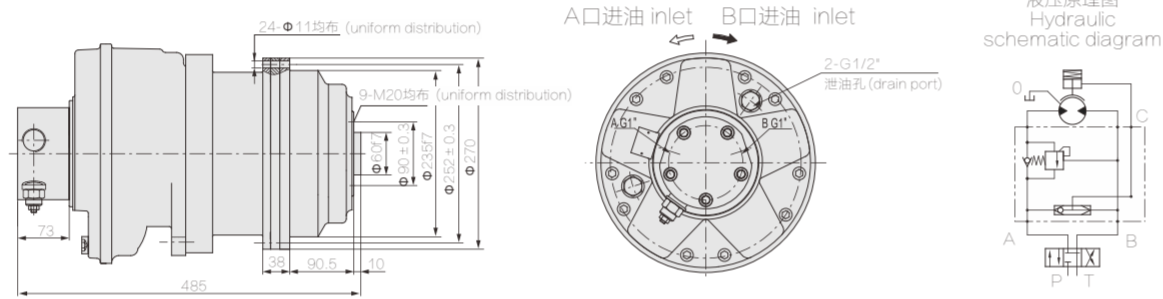
KCN3 系列液压传动装置



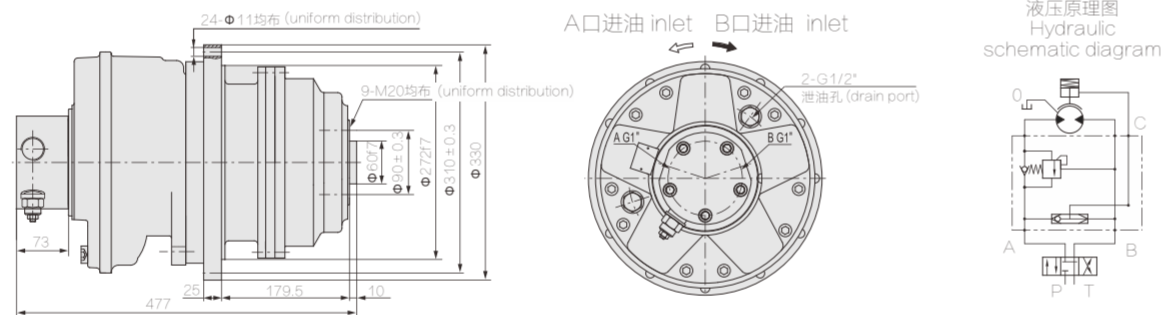
无制动器 Without brake



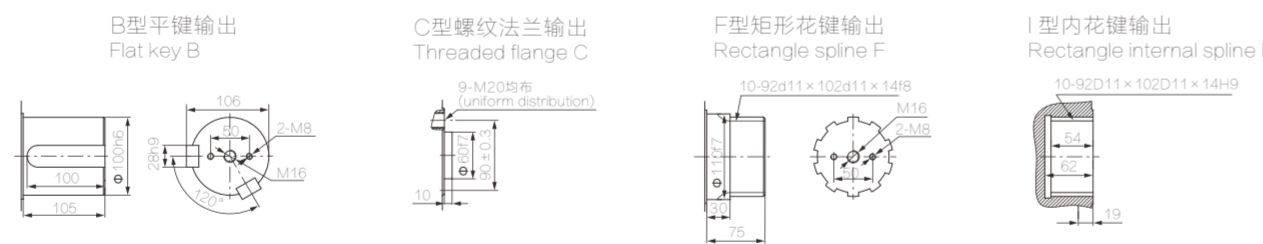
带制动器(外置式) With brake and external installation



带制动器(内置式) With brake and internal installation



输出轴形式 Shaft dimensions



型号 Model	总排量 Displacement (ml/r)	额定扭矩 Rated Torque (N.m) 20MPa	转速范围 Speed range (r/min)	总效率 Total efficiency	液压马达型号 Hydraulic motor model	行星减速机 机型号 Planetary gearbox	制动器型号 Brake
KCN3-1700	1735	4823	0-90	0.88-0.9	KGM2-350	C3-5	Z3
KCN3-1900	1908	5306	0-80	0.88-0.9	KGM2-350	C3-5.5	Z3
KCN3-2300	2338	6492	0-75	0.88-0.9	KGM2-420	C3-5.5	Z3

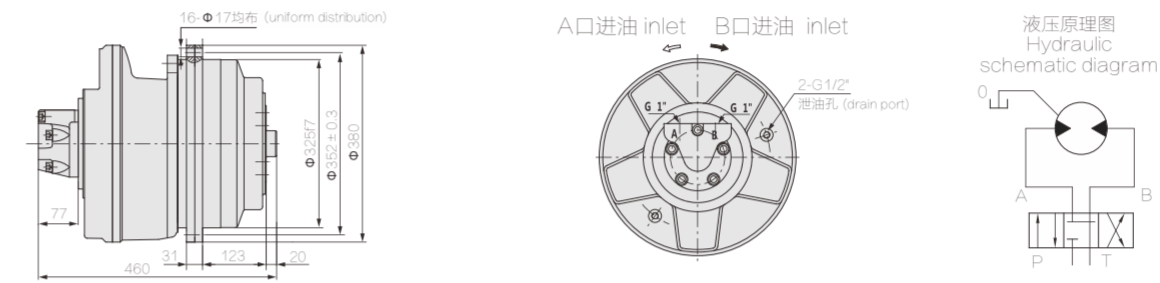
注: 如客户需要其它速比和其它输出形式, 请与本公司联系。
Note: If the customer need other speed ratio and other output form, please contact with us.

宁波布雷维克液压传动有限公司 NINGBO BREVIK HYDRAULIC TRANSMISSION CO.,LTD.
地址: 宁波市北仑区南山路185号 电话: 0574-55876078 传真: 0574-55876079 网址: www.nbbvk.com 邮箱: nb_bvk@163.com

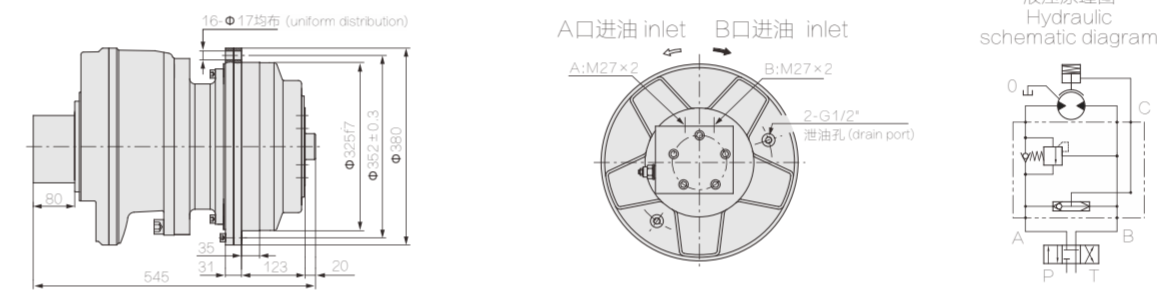
KCN4 系列液压传动装置



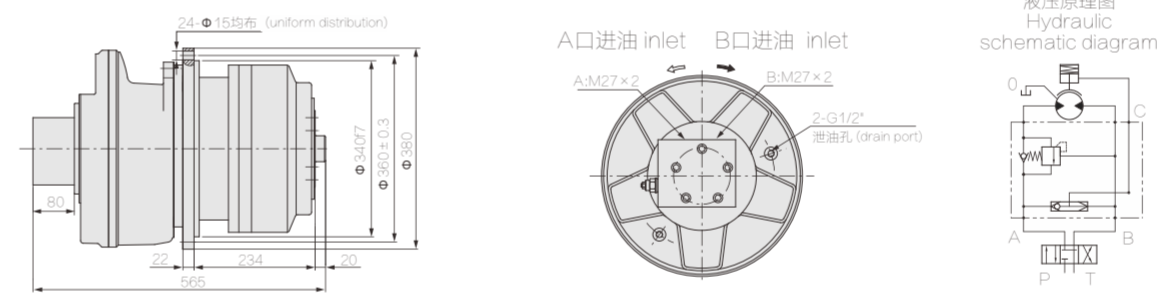
无制动器 Without brake



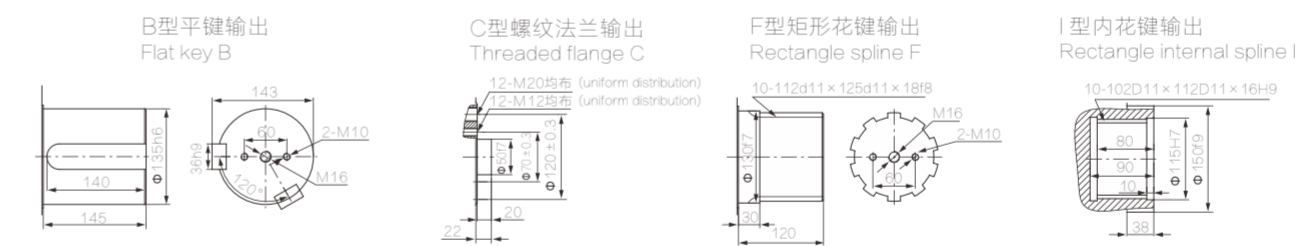
带制动器(外置式) With brake and external installation



带制动器(内置式) With brake and internal installation



输出轴形式 Shaft dimensions



型号 Model	总排量 Displacement (ml/r)	额定扭矩 Rated Torque (N.m) 20MPa	转速范围 Speed range (r/min)	总效率 Total efficiency	液压马达型号 Hydraulic motor model	行星减速机 机型号 Planetary gearbox	制动器型号 Brake
KCN4-2450	2430	6800	0-80	0.9-0.91	KGM3-500	C4-5	Z4
KCN4-3000	2975	8398	0-80	0.9-0.91	KGM3-600	C4-5	Z4
KCN4-3500	3450	9774	0-80	0.9-0.91	KGM3-700	C4-5	Z4
KCN4-4000	3960	11222	0-80	0.9-0.91	KGM3-800	C4-5	Z4
KCN4-4400	4356	12344	0-70	0.9-0.91	KGM3-800	C4-5.5	Z4
KCN4-4800	4801	13538	0-70	0.9-0.91	KGM3-900	C4-5.5	Z4

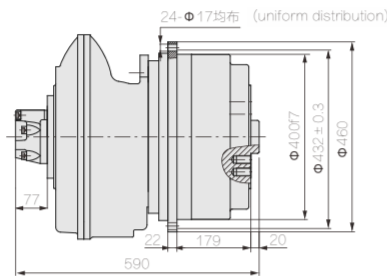
注: 如客户需要其它速比和其它输出形式, 请与本公司联系。
Note: If the customer need other speed ratio and other output form, please contact with us.

宁波布雷维克液压传动有限公司 NINGBO BREVIK HYDRAULIC TRANSMISSION CO.,LTD.
地址: 宁波市北仑区南山路185号 电话: 0574-55876078 传真: 0574-55876079 网址: www.nbbvk.com 邮箱: nb_bvk@163.com

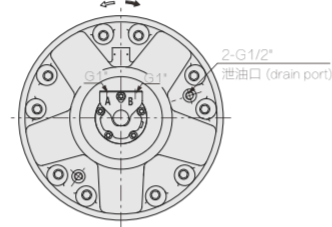
KCN5 系列液压传动装置



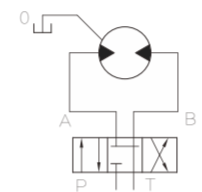
无制动器 Without brake



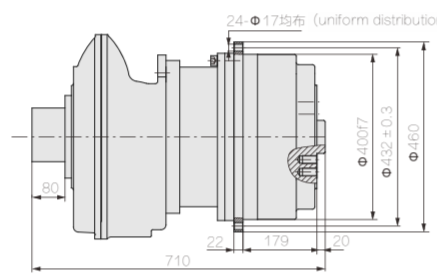
A口进油 inlet B口进油 inlet



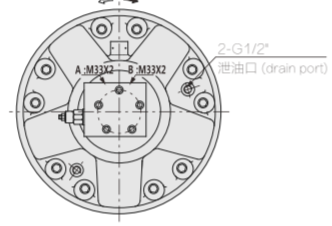
液压原理图
Hydraulic schematic diagram



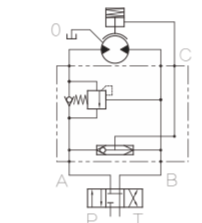
带制动器(外置式) With brake and external installation



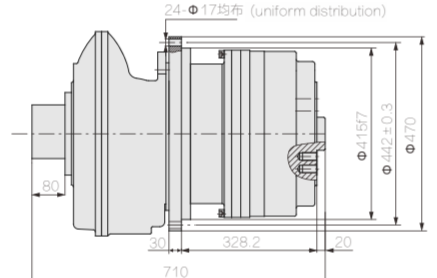
A口进油 inlet B口进油 inlet



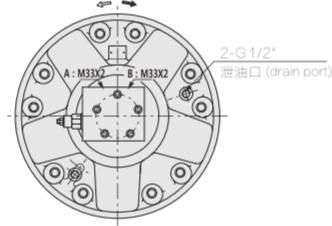
液压原理图
Hydraulic schematic diagram



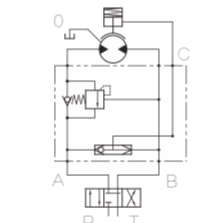
带制动器(内置式) With brake and internal installation



A口进油 inlet B口进油 inlet

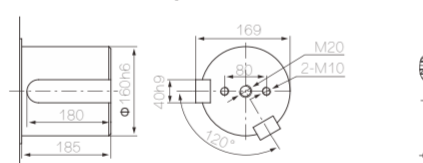


液压原理图
Hydraulic schematic diagram

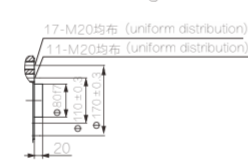


输出轴形式 Shaft dimensions

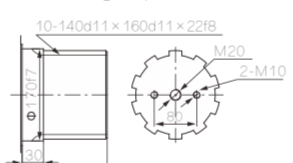
B型平键输出
Flat key B



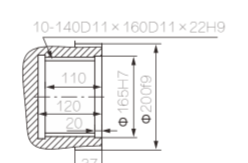
C型螺纹法兰输出
Threaded flange C



F型矩形花键输出
Rectangle spine F



I型内花键输出
Rectangle internal spline I



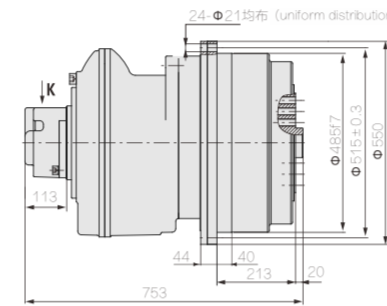
型号 Model	总排量 Displacement (ml/r)	额定扭矩 Rated Torque (N.m) 20MPa	转速范围 Speed range (r/min)	总效率 Total efficiency	液压马达型号 Hydraulic motor model	行星减速机型号 Planetary gearbox	制动器型号 Brake
KCN5-5200	5195	14596	0-70	0.9-0.91	KGM5-1000	C5-5	Z5
KCN5-5700	5714	16056	0-65	0.9-0.91	KGM5-1000	C5-5.5	Z5
KCN5-6000	5925	16742	0-70	0.9-0.91	KGM5-1200	C5-5	Z5
KCN5-6700	6700	18915	0-70	0.9-0.91	KGM5-1300	C5-5	Z5
KCN5-7300	7310	20634	0-70	0.9-0.91	KGM5-1450	C5-5	Z5
KCN5-8150	8170	22987	0-70	0.9-0.91	KGM5-1600	C5-5	Z5
KCN5-9000	9080	25612	0-70	0.9-0.91	KGM5-1800	C5-5	Z5
KCN5-10000	9988	28173	0-60	0.9-0.91	KGM5-1800	C5-5.5	Z5
KCN5-11600	11639	31159	0-50	0.9-0.91	KGM5-2600	C5-5.5	Z5

宁波布雷维克液压传动有限公司 NINGBO BREVIK HYDRAULIC TRANSMISSION CO.,LTD.
地址: 宁波市北仑区申前山路185号 电话: 0574-55876078 传真: 0574-55876079 网址: www.nbbv.com 邮箱: nb_bvk@163.com

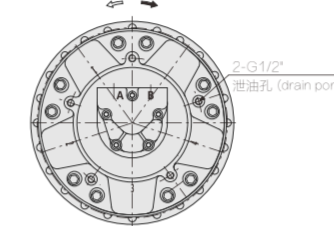
KCN6 系列液压传动装置



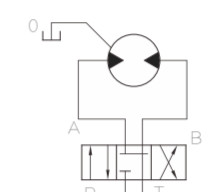
无制动器 Without brake



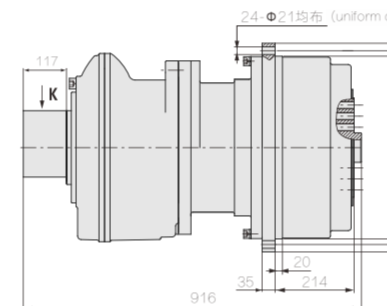
A口进油 inlet B口进油 inlet



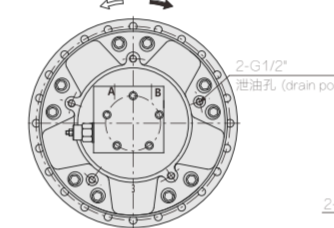
液压原理图
Hydraulic schematic diagram



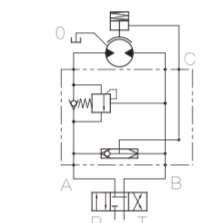
带制动器(外置式) With brake and external installation



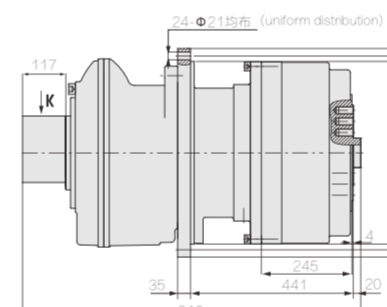
A口进油 inlet B口进油 inlet



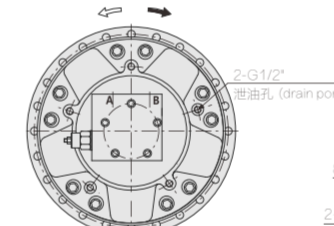
液压原理图
Hydraulic schematic diagram



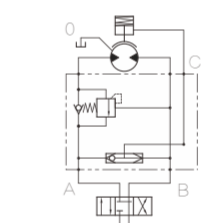
带制动器(内置式) With brake and internal installation



A口进油 inlet B口进油 inlet

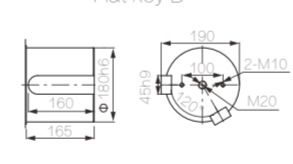


液压原理图
Hydraulic schematic diagram

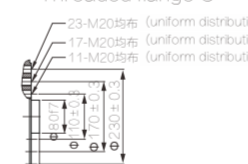


输出轴形式 Shaft dimensions

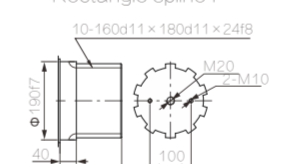
B型平键输出
Flat key B



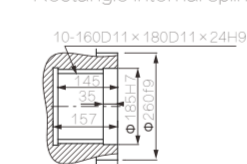
C型螺纹法兰输出
Threaded flange C



F型矩形花键输出
Rectangle spine F



I型内花键输出
Rectangle internal spline I



型号 Model	总排量 Displacement (ml/r)	额定扭矩 Rated Torque (N.m) 20MPa	转速范围 Speed range (r/min)	总效率 Total efficiency	液压马达型号 Hydraulic motor model	行星减速机型号 Planetary gearbox	制动器型号 Brake
KCN6-10500	12468	30046	0-40	0.9-0.91	KGM6-2100	C6-5	Z6
KCN6-12500	12565	35476	0-40	0.9-0.91	KGM6-2500	C6-5	Z6
KCN6-15200	15205	42987	0-40	0.9-0.91	KGM6-3000	C6-5	Z6
KCN6-16500	16725	47286	0-30	0.9-0.91	KGM6-3000	C6-5.5	Z6
KCN6-20000	19860	57141	0-30	0.9-0.91	KGM6-3600	C6-5.5	Z6

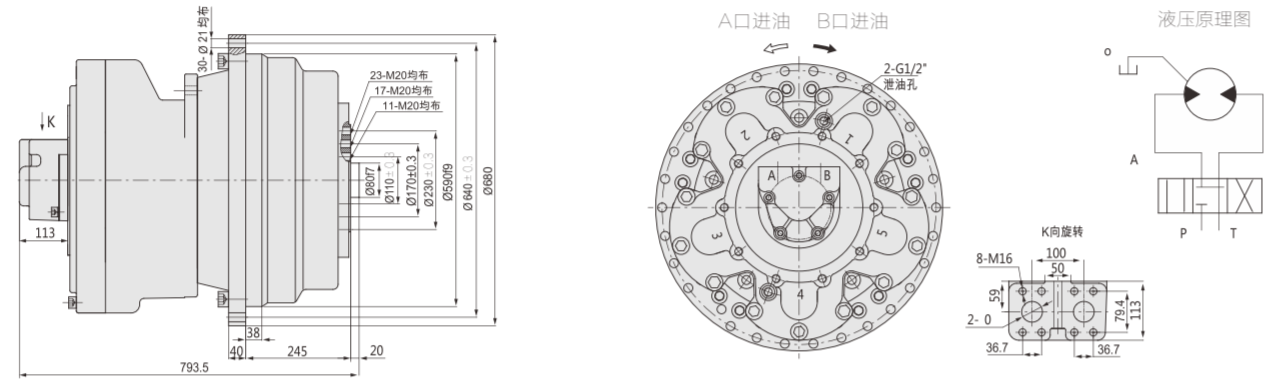
注: 如客户需要其它速比和其它输出形式, 请与本公司联系。
Note: If the customer need other speed ratio and other output form, please contact with us.

宁波布雷维克液压传动有限公司 NINGBO BREVIK HYDRAULIC TRANSMISSION CO.,LTD.
地址: 宁波市北仑区申前山路185号 电话: 0574-55876078 传真: 0574-55876079 网址: www.nbbv.com 邮箱: nb_bvk@163.com

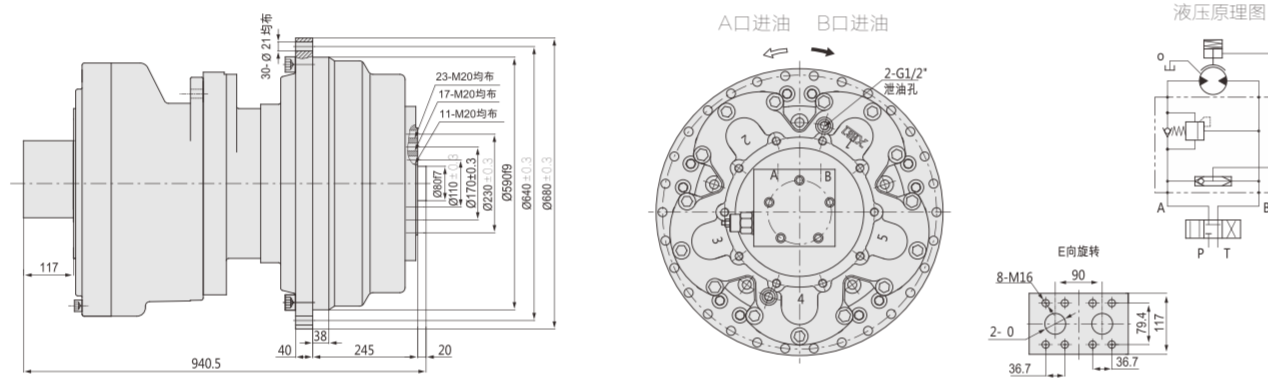
KCN7 系列液压传动装置



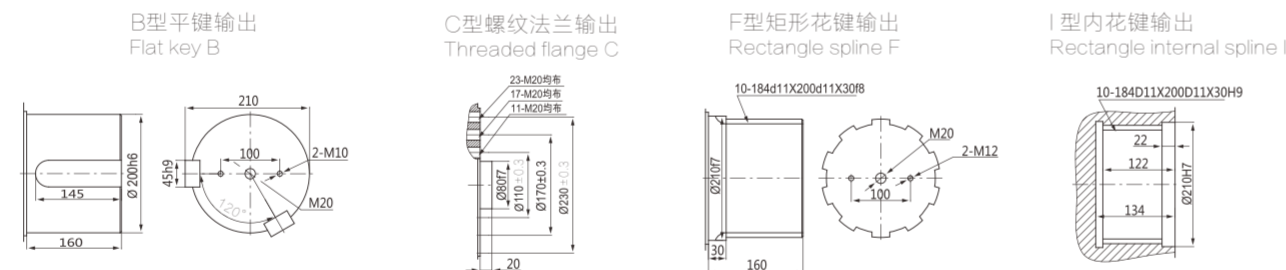
无制动器 Without brake



带制动器(外置式) With brake and external installation



输出轴形式 Shaft dimensions



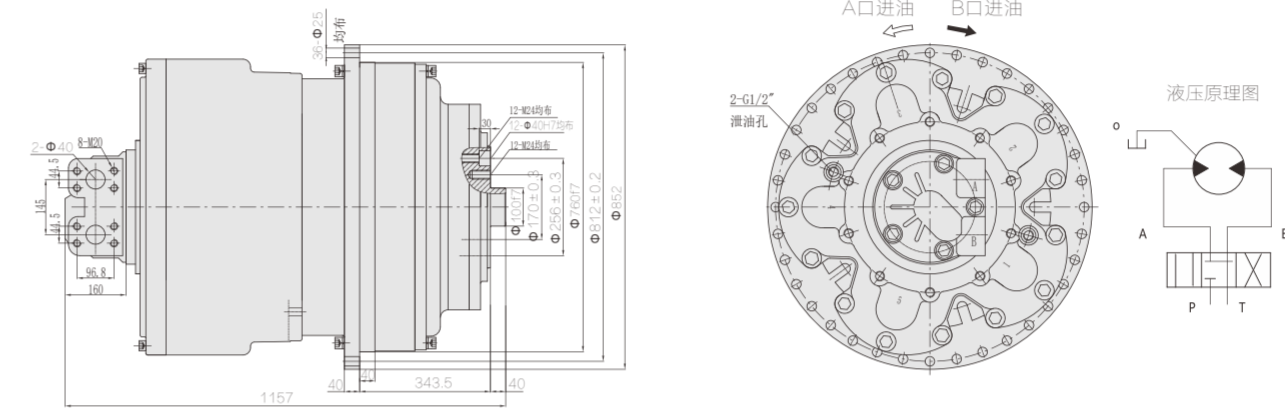
型号 Model	总排量 Displacement (ml/r)	额定扭矩 Rated Torque (N.m) 20MPa	转速范围 Speed range (r/min)	总效率 Total efficiency	液压马达型号 Hydraulic motor model	行星减速机型号 Planetary gearbox	制动器型号 Brake
KCN7-15200	14925	42995	0-35	0.9-0.91	KGM7-3000	C7-5	Z7
KCN7-16500	16450	47332	0-35	0.9-0.91	KGM7-3300	C7-5	Z7
KCN7-18000	18055	51947	0-35	0.9-0.91	KGM7-3600	C7-5	Z7
KCN7-21500	21490	61902	0-35	0.9-0.91	KGM7-4300	C7-5.5	Z7
KCN7-23650	23639	68092	0-30	0.9-0.91	KGM7-4300	C7-5.5	Z7

注: 如客户需要其它速比和其它输出形式, 请与本公司联系。
Note: If the customer need other speed ratio and other output form, please contact with us.

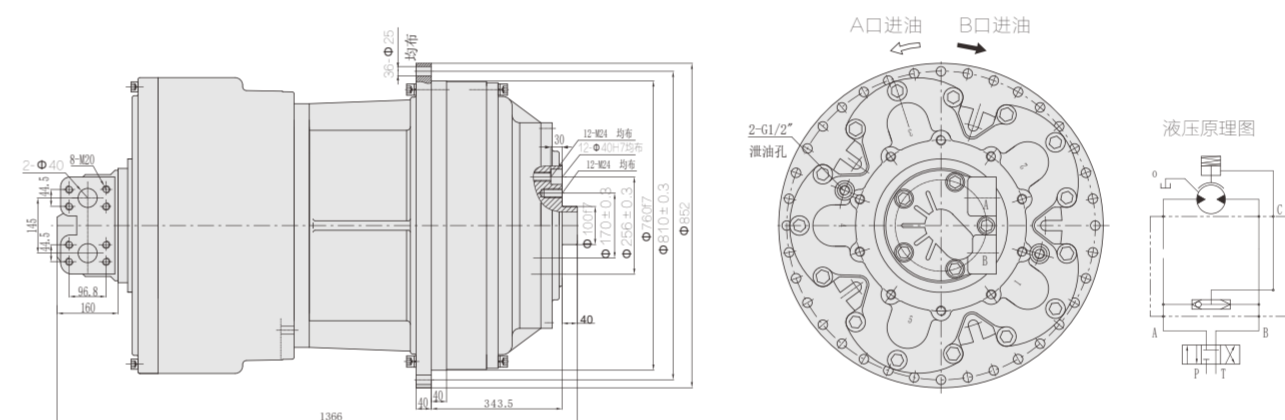
KCN9 系列液压传动装置



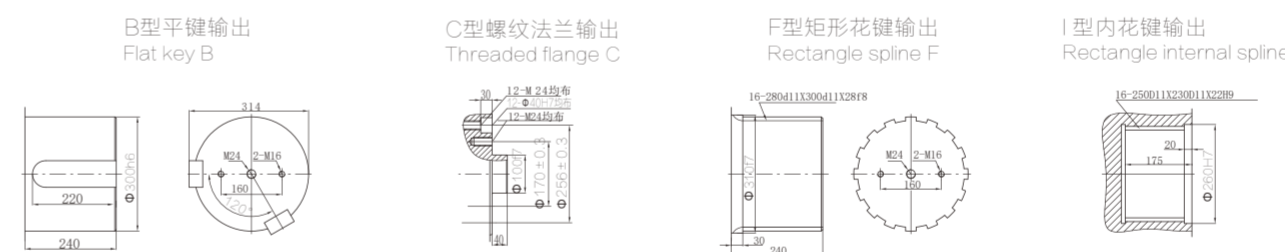
无制动器 Without brake



带制动器(外置式) With brake and external installation



输出轴形式 Shaft dimensions



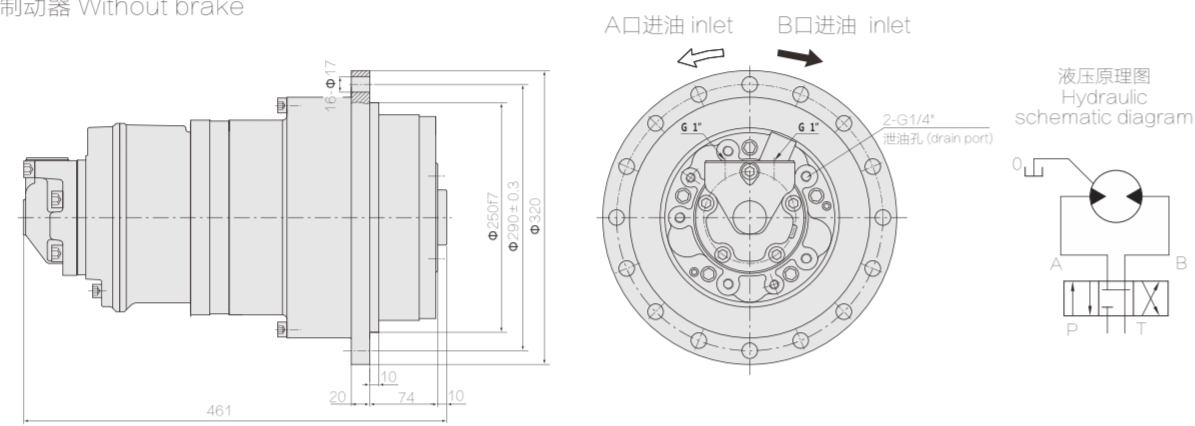
型号 Model	总排量 Displacement (ml/r)	额定扭矩 Rated Torque (N.m) 16MPa 20MPa	转速范围 Speed range (r/min)	总效率 Total efficiency	液压马达型号 Hydraulic motor model	行星减速机型号 Planetary gearbox	制动器型号 Brake
KCN9-23000	23090	51744 64680	0~15	0.9~0.91	KGM9-4600	C9-5.0	Z9
KCN9-28500	28270	63360 79200	0~15	0.9~0.91	KGM9-5700	C9-5.0	Z9
KCN9-33000	33180	74342 92928	0~15	0.9~0.91	KGM9-6600	C9-5.0	Z9
KCN9-38500	33480	86240 107800	0~15	0.9~0.91	KGM9-7700	C9-5.0	Z9
KCN9-44000	44180	98982	0~15	0.9~0.91	KGM9-8800	C9-5.0	Z9
KCN9-48400	48598	108880	0~15	0.9~0.91	KGM9-8800	C9-5.5	Z9
KCN9-56000	56291	123904	0~15	0.9~0.91	KGM9-10000	C9-5.5	Z9
KCN9-66000	66143	148220	0~15	0.9~0.91	KGM9-12000	C9-5.5	Z9

注: 如客户需要其它速比和其它输出形式, 请与本公司联系。
Note: If the customer need other speed ratio and other output form, please contact with us.

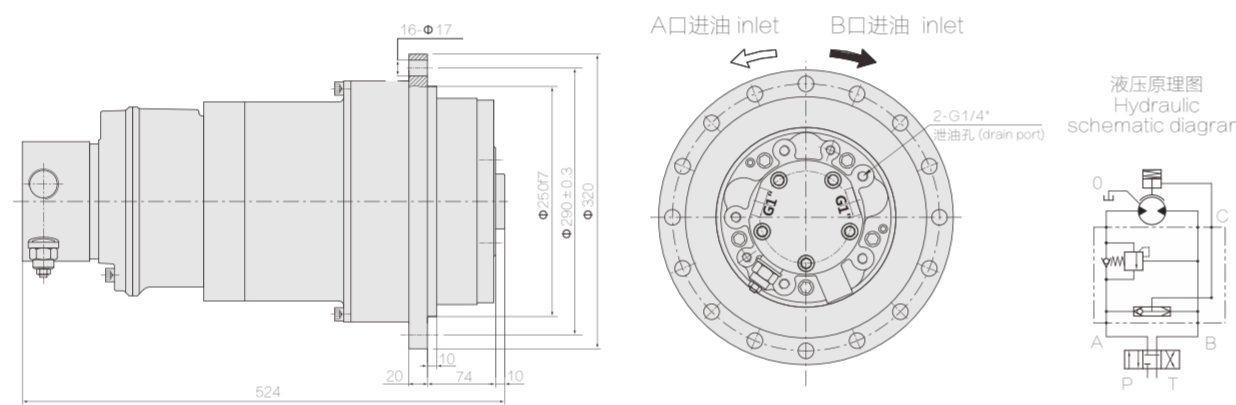
KCN2.5 3 系列液压传动装置



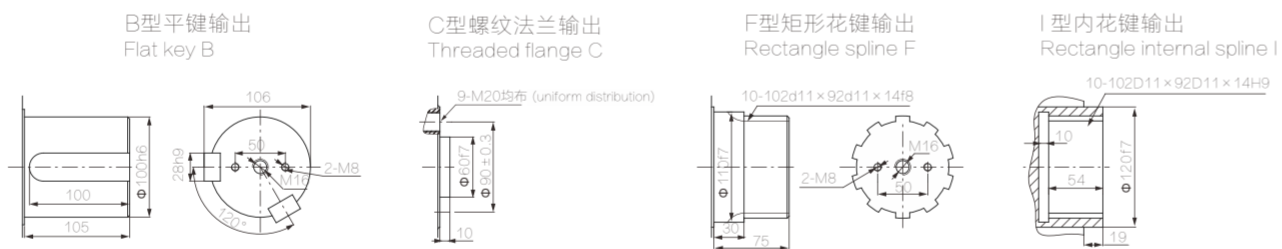
无制动器 Without brake



带制动器(外置式) With brake and external installation



输出轴形式 Shaft dimensions



型号 Model	总排量 Displacement (ml/r)	额定扭矩 Rated Torque (N.m) 16MPa 20MPa	转速范围 Speed range (r/min)	总效率 Total efficiency	液压马达型号 Hydraulic motor model	行星减速机型号 Planetary gearbox	制动器型号 Brake
KCN2.5 3-1700	1720	3864 4829	0~19	0.88~0.9	KGM05-90	C2.5 3-20	Z2.5
KCN2.5 3-2300	2300	5159 6448	0~19	0.88~0.9	KGM05-110	C2.5 3-20	Z2.5
KCN2.5 3-2600	2580	5776 7223	0~19	0.88~0.9	KGM05-130	C2.5 3-20	Z2.5
KCN2.5 3-3000	3020	6758 8448	0~19	0.88~0.9	KGM05-150	C2.5 3-20	Z2.5
KCN2.5 3-3300	3320	7434 9293	0~19	0.88~0.9	KGM05-170	C2.5 3-20	Z2.5
KCN2.5 3-3800	3820	8560 9856	0~19	0.88~0.9	KGM05-200	C2.5 3-20	Z2.5

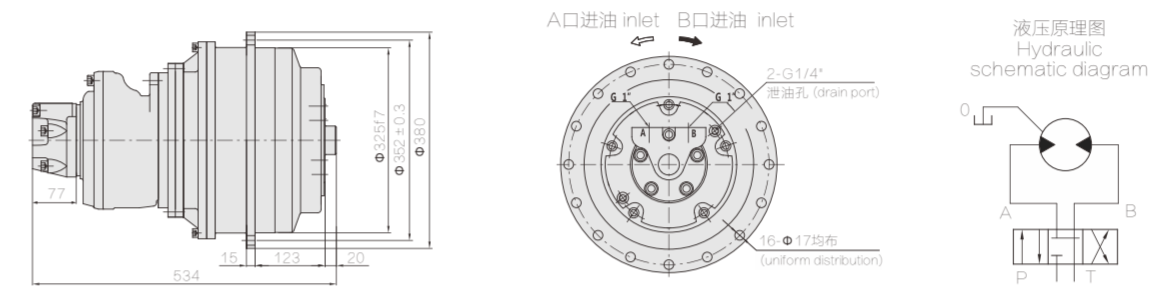
注: 如客户需要其它速比和其它输出形式, 请与本公司联系。
Note: If the customer need other speed ratio and other output form, please contact with us.

宁波布雷维克液压传动有限公司 NINGBO BREVIK HYDRAULIC TRANSMISSION CO.,LTD.
地址: 宁波市北仑区申新路185号 电话: 0574-55876078 传真: 0574-55876079 网址: www.nbbvk.com 邮箱: nb_bvk@163.com

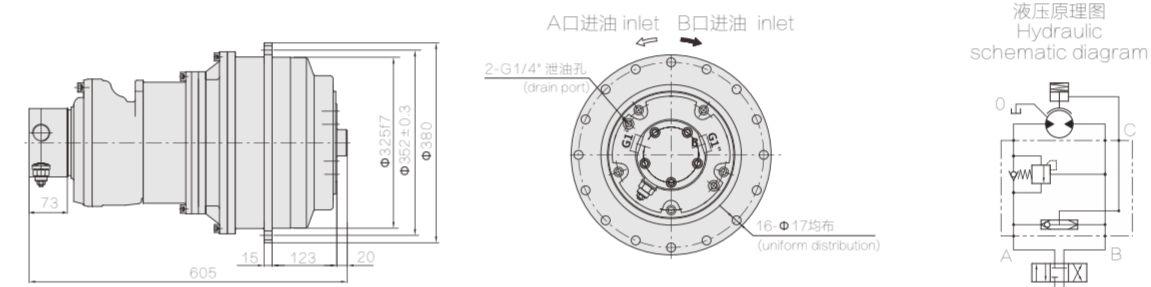
KCN3 4 系列液压传动装置



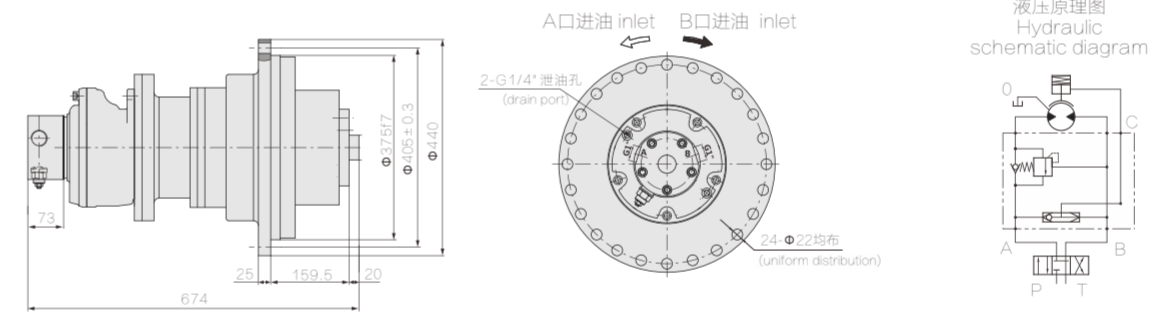
无制动器 Without brake



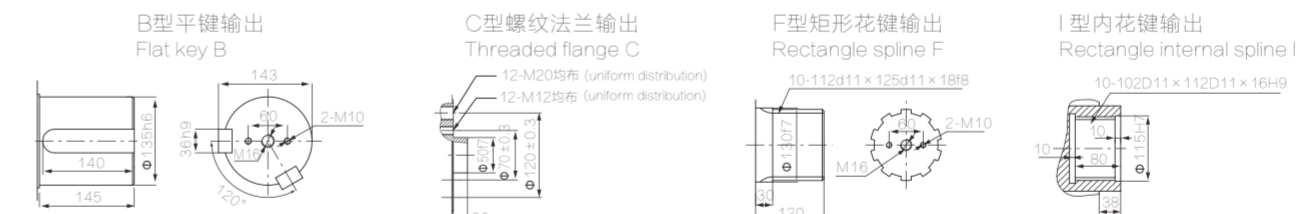
带制动器(外置式) With brake and external installation



带制动器(内置式) With brake and internal installation



输出轴形式 Shaft dimensions



型号 Model	总排量 Displacement (ml/r)	额定扭矩 Rated Torque (N.m) 16MPa 20MPa	转速范围 Speed range (r/min)	总效率 Total efficiency	液压马达型号 Hydraulic motor model	行星减速机型号 Planetary gearbox	制动器型号 Brake
KCN3 4-3500	3440	7547 9433	0~18	0.88~0.9	KGM1-175	C3 4-20	Z3
KCN3 4-4000	4020	8842 11052	0~18	0.88~0.9	KGM1-200	C3 4-20	Z3
KCN3 4-4900	4860	10700 13376	0~18	0.88~0.9	KGM1-250	C3 4-20	Z3
KCN3 4-5800	5800	12728 15910	0~18	0.88~0.9	KGM1-300	C3 4-20	Z3
KCN3 4-6800	6804	14980 18725	0~12	0.88~0.9	KGM1-250	C3 4-28	Z3
KCN3 4-8100	8120	17819 22344	0~12	0.88~0.9	KGM1-300	C3 4-28	Z3

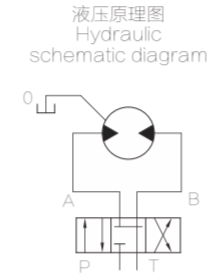
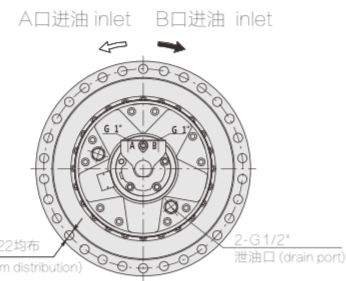
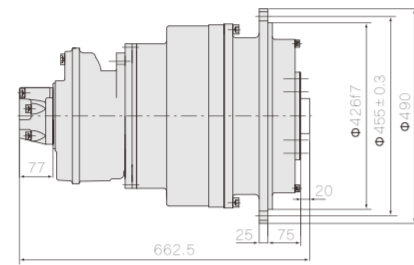
注: 如客户需要其它速比和其它输出形式, 请与本公司联系。
Note: If the customer need other speed ratio and other output form, please contact with us.

宁波布雷维克液压传动有限公司 NINGBO BREVIK HYDRAULIC TRANSMISSION CO.,LTD.
地址: 宁波市北仑区申新路185号 电话: 0574-55876078 传真: 0574-55876079 网址: www.nbbvk.com 邮箱: nb_bvk@163.com

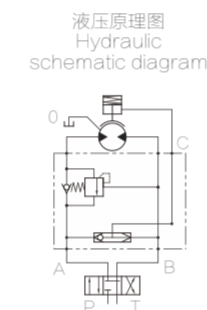
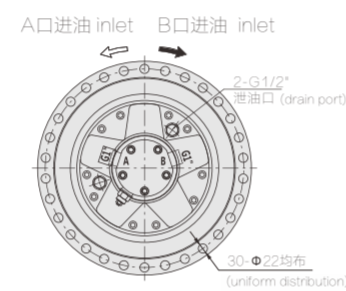
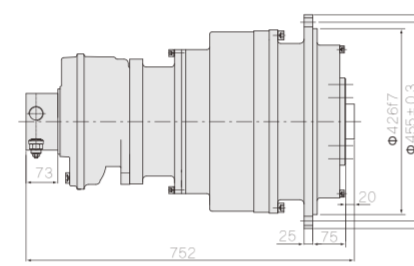
KCN4 5 系列液压传动装置



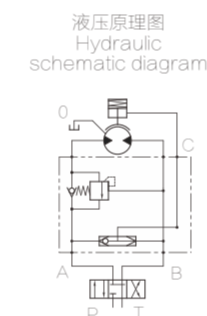
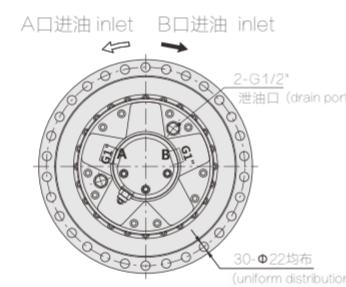
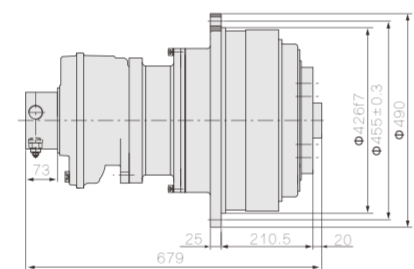
无制动器 Without brake



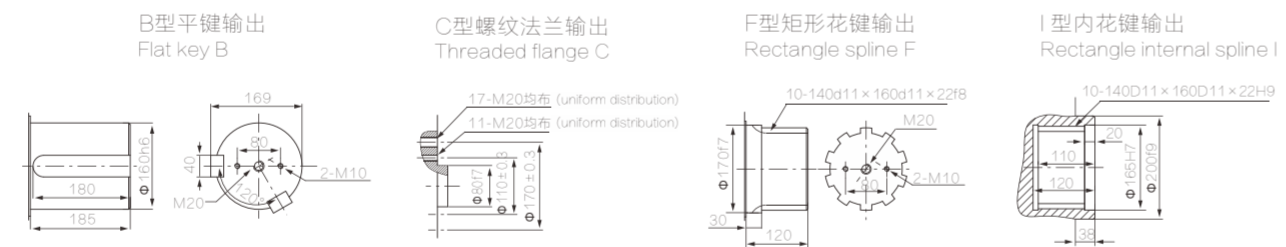
带制动器(外置式) With brake and external installation



带制动器(内置式) With brake and internal installation



输出轴形式 Shaft dimensions



型号 Model	总排量 Displacement (ml/r)	额定扭矩 Rated Torque (N.m) 16MPa 20MPa	转速范围 Speed range (r/min)	总效率 Total efficiency	液压马达型号 Hydraulic motor model	行星减速机型号 Planetary gearbox	制动器型号 Brake
KCN4 5-7000	6940	15263 19078	0~15	0.88~0.9	KGM2-350	C4 5-20	Z4
KCN4 5-8500	8500	18646 23344	0~15	0.88~0.9	KGM2-420	C4 5-20	Z4
KCN4 5-10000	9526	21661 27046	0~15	0.88~0.9	KGM2-500	C4 5-20	Z4
KCN4 5-12000	11900	26146 32682	0~11	0.88~0.9	KGM2-420	C4 5-28	Z4
KCN4 5-14000	13804	30325 38120	0~11	0.88~0.9	KGM2-500	C4 5-28	Z4

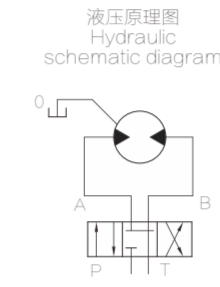
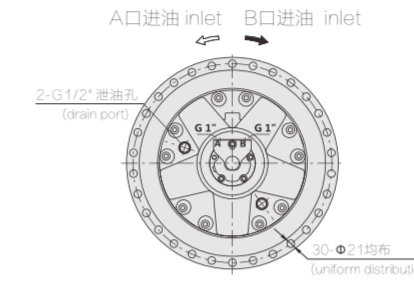
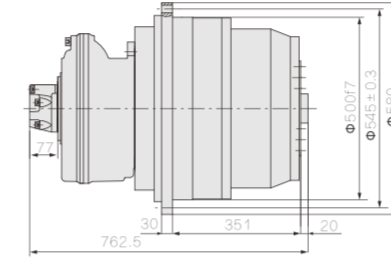
注: 如客户需要其它速比和其它输出形式, 请与本公司联系。
Note: If the customer need other speed ratio and other output form, please contact with us.

宁波布雷维克液压传动有限公司 NINGBO BREVIK HYDRAULIC TRANSMISSION CO.,LTD.
地址: 宁波市北仑区南山路185号 电话: 0574-55876078 传真: 0574-55875079 网址: www.nbbv.com 邮箱: nb_bvk@163.com

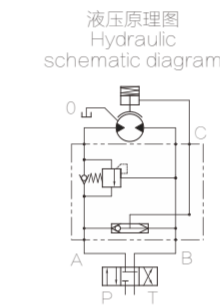
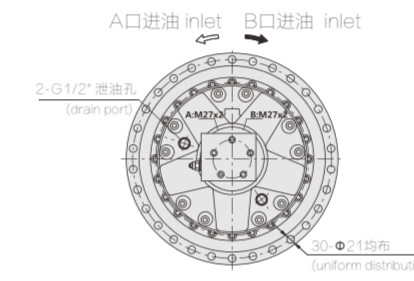
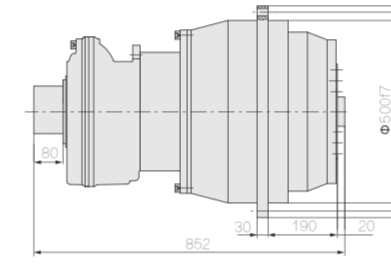
KCN5 6 系列液压传动装置



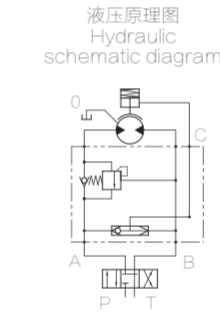
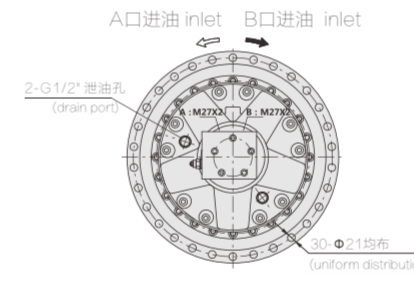
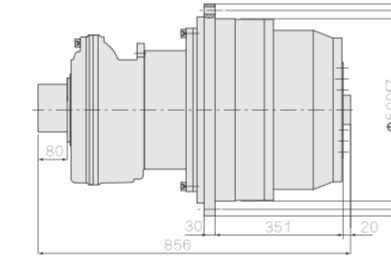
无制动器 Without brake



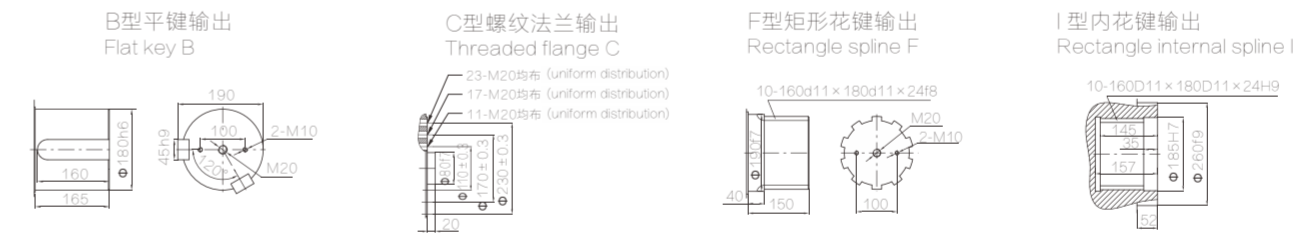
带制动器(外置式) With brake and external installation



带制动器(内置式) With brake and internal installation



输出轴形式 Shaft dimensions



型号 Model	总排量 Displacement (ml/r)	额定扭矩 Rated Torque (N.m) 16MPa 20MPa	转速范围 Speed range (r/min)	总效率 Total efficiency	液压马达型号 Hydraulic motor model	行星减速机型号 Planetary gearbox	制动器型号 Brake
KCN5 6-12000	12320	27067 33834	0~14	0.88~0.9	KGM4-600	C5 6-20	Z5
KCN5 6-18000	15860	34918 43648	0~14	0.88~0.9	KGM4-800	C5 6-20	Z5
KCN5 6-18000	18080	39706 49632	0~14	0.88~0.9	KGM4-900	C5 6-20	Z5
KCN5 6-20000	20440	45056 56320	0~14	0.88~0.9	KGM4-1000	C5 6-20	Z5
KCN5 6-22000	22204	48885 61106	0~10	0.88~0.9	KGM4-800	C5 6-28	Z5
KCN5 6-25000	25312	55587 -	0~10	0.88~0.9	KGM4-900	C5 6-28	Z5
KCN5 6-28000	28616	63078 -	0~10	0.88~0.9	KGM4-1000	C5 6-28	Z5

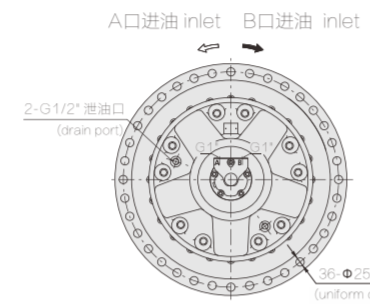
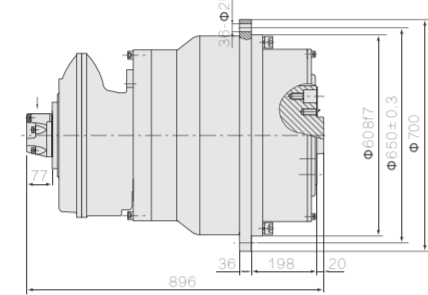
注: 如客户需要其它速比和其它输出形式, 请与本公司联系。
Note: If the customer need other speed ratio and other output form, please contact with us.

宁波布雷维克液压传动有限公司 NINGBO BREVIK HYDRAULIC TRANSMISSION CO.,LTD.
地址: 宁波市北仑区南山路185号 电话: 0574-55876078 传真: 0574-55875079 网址: www.nbbv.com 邮箱: nb_bvk@163.com

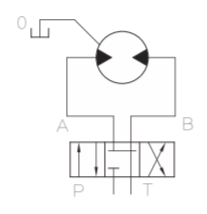
KCN6 7 系列液压传动装置



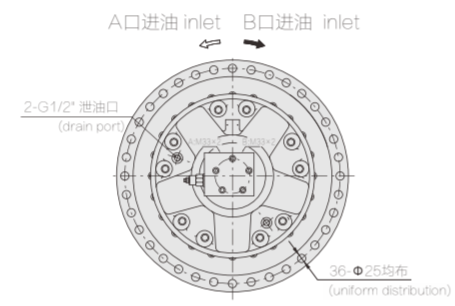
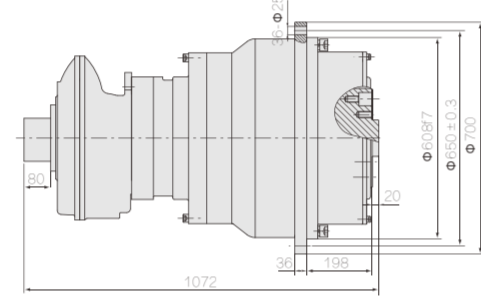
无制动器 Without brake



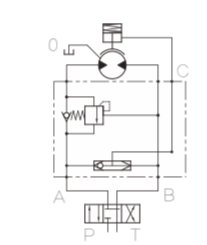
液压原理图
Hydraulic
schematic diagram



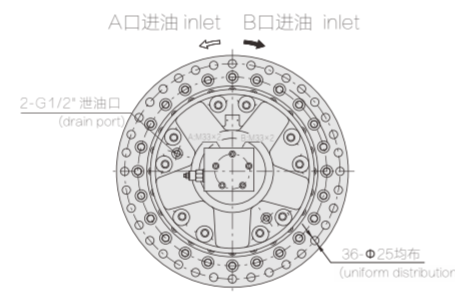
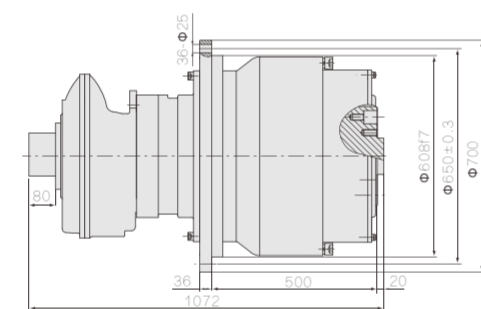
带制动器(外置式) With brake and external installation



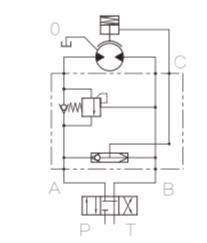
液压原理图
Hydraulic
schematic diagram



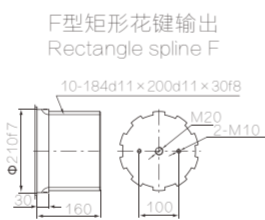
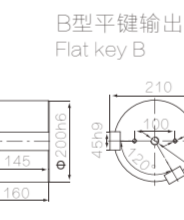
带制动器(内置式) With brake and internal installation



液压原理图
Hydraulic
schematic diagram



输出轴形式 Shaft dimensions



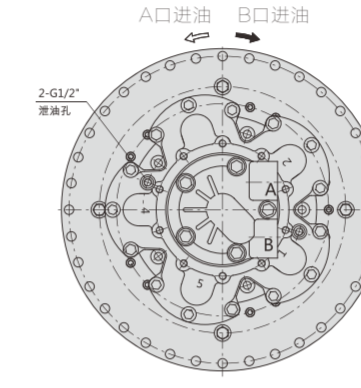
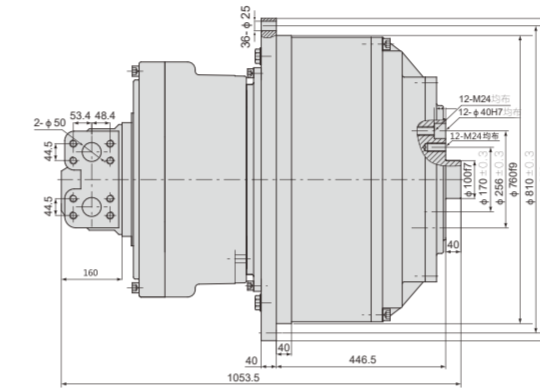
型号 Model	总排量 Displacement (ml/r)	额定扭矩 Rated Torque (N.m) 16MPa 20MPa	转速范围 Speed range (r/min)	总效率 Total efficiency	液压马达型号 Hydraulic motor model	行星减速机型号 Planetary gearbox	制动器型号 Brake
KCN6 7-29000	29240	64205 80256	0~13	0.88~0.9	KGM5-1450	C6 7-20	Z6
KCN6 7-33000	32680	71526 89408	0~13	0.88~0.9	KGM5-1600	C6 7-20	Z6
KCN6 7-36000	36320	79682 99616	0~13	0.88~0.9	KGM5-1800	C6 7-20	Z6
KCN6 7-41000	40936	89887 -	0~9	0.88~0.9	KGM5-1450	C6 7-28	Z6
KCN6 7-46000	45752	100136 -	0~9	0.88~0.9	KGM5-1600	C6 7-28	Z6

注: 如客户需要其它速比和其它输出形式, 请与本公司联系。
Note: If the customer need other speed ratio and other output form, please contact with us.

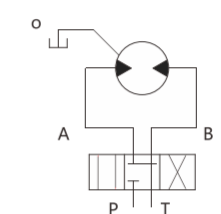
KCN7 9 系列液压传动装置



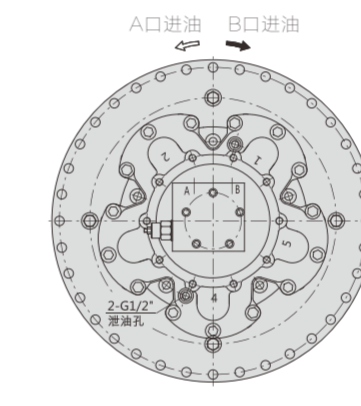
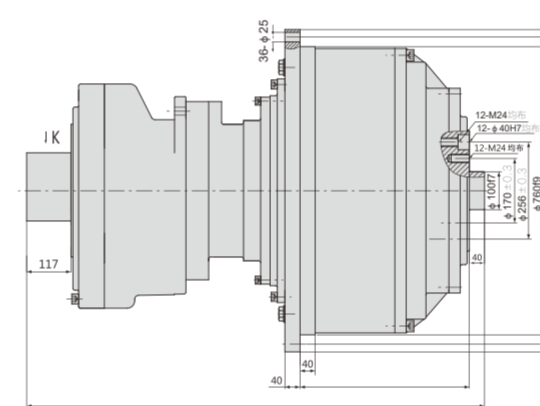
无制动器 Without brake



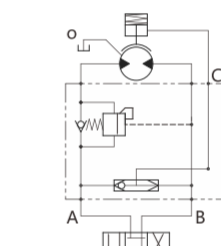
液压原理图



带制动器(外置式) With brake and external installation

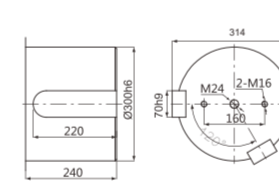


液压原理图

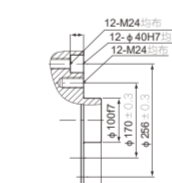


输出轴形式 Shaft dimensions

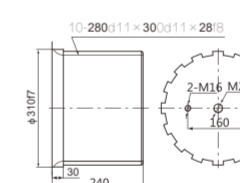
B型平键输出
Flat key B



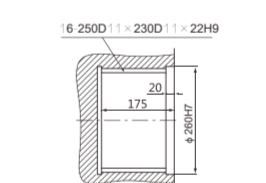
C型螺纹法兰输出
Threaded flange C



F型矩形花键输出
Rectangle spline F



I型内花键输出
Rectangle internal spline I



型号 Model	总排量 Displacement (ml/r)	额定扭矩 Rated Torque (N.m) 16MPa 20MPa	转速范围 Speed range (r/min)	总效率 Total efficiency	液压马达型号 Hydraulic motor model	行星减速机型号 Planetary gearbox	制动器型号 Brake
KCN7 9-40000	40140	89830 112288	0~9	0.88~0.9	KGM7-2000	C7 9-20	Z7
KCN7 9-50000	50520	113203 141504	0~9	0.88~0.9	KGM7-2500	C7 9-20	Z7
KCN7 9-60000	59700	133782 167228	0~8	0.88~0.9	KGM7-3000	C7 9-20	Z7
KCN7 9-66000	65800	147277 182623	0~8	0.88~0.9	KGM7-3300	C7 9-20	Z7
KCN7 9-72000	72220	161638 -	0~7	0.88~0.9	KGM7-3600	C7 9-20	Z7
KCN7 9-83000	83580	187290 -	0~6	0.88~0.9	KGM7-3000	C7 9-28	Z7

注: 如客户需要其它速比和其它输出形式, 请与本公司联系。
Note: If the customer need other speed ratio and other output form, please contact with us.